

©2021 Saif Properties

PEARL VIEW KISAASI

info.uganda@saifproperties.com

www.saifrealestateuganda.com

0773 230 003

SAIF
REAL ESTATE

OVERVIEW

ABOUT PEARL VIEW

Pearl View Kisaasi, a development like no other in Kampala, Uganda. Crafted with a unique attention to detail and a clear vision to deliver a high quality product.

Pearl View offers **2** and **3**-Bedroom Master Ensuite Apartments with **92m²** and **120m²** respectively. All coming at an affordable price with an exciting **12-year Payment Plan at 0% Interest.**

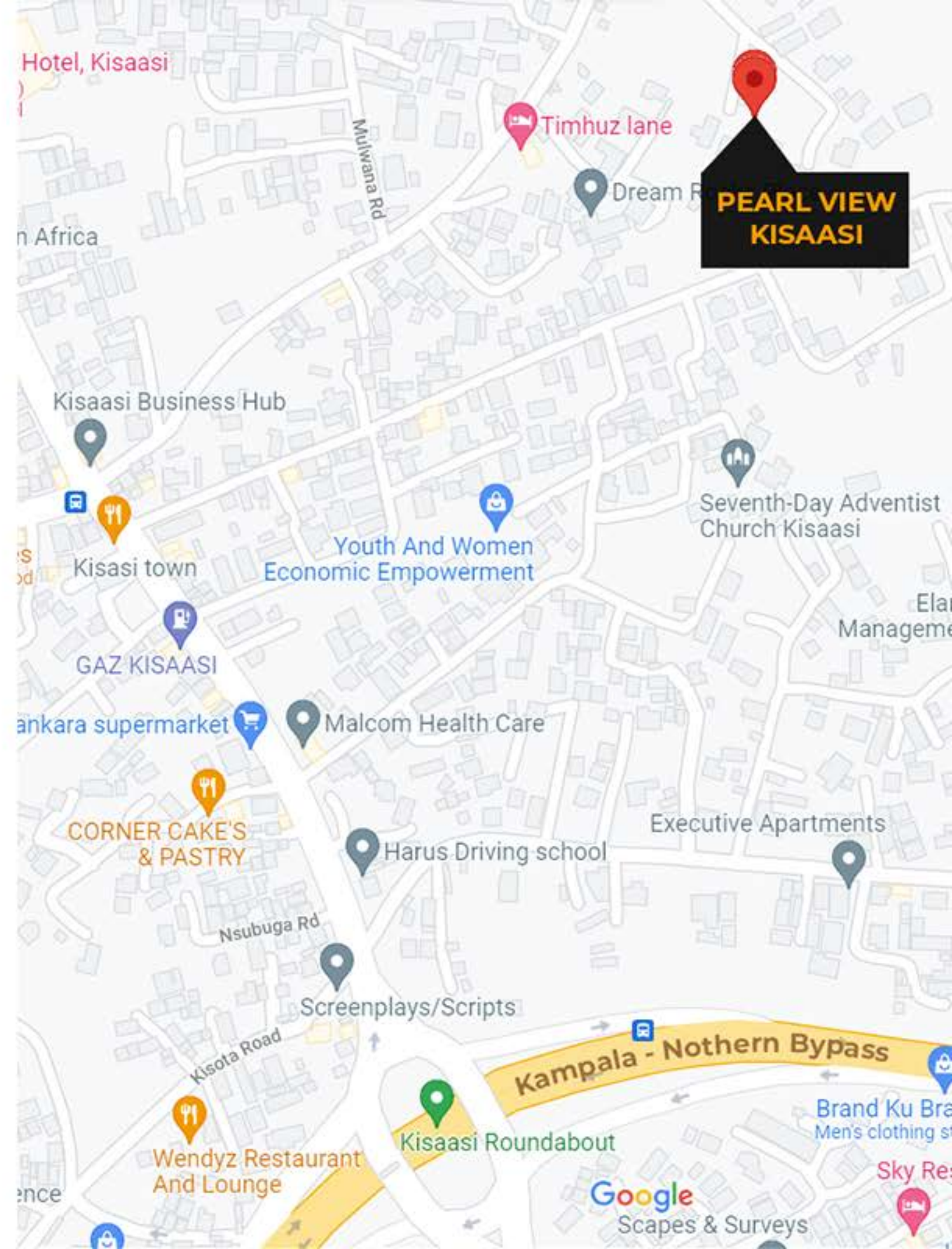


LOCATION

PEARL VIEW LOCATION

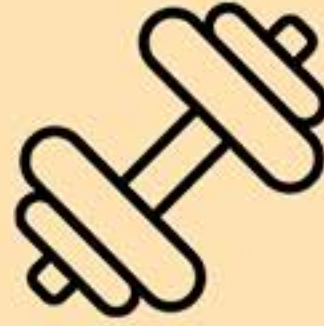
Located 200meters off the Northern Bypass in an elite residential suburb **Kisaasi - Kulambiro**. With quick access to the city of Kampala providing a peaceful, safe and serene environment you can confidently call home.

Access to international schooling, recreations and world standard health care, this is the perfect location for healthy, happy and memorable living.

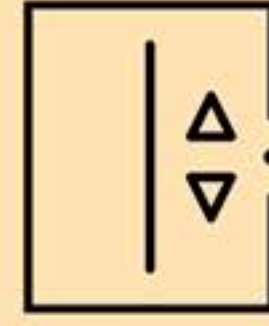




**HEATED
SWIMMING POOL**



**STATE OF
THE ART GYM**



**HIGH
SPEED LIFT**



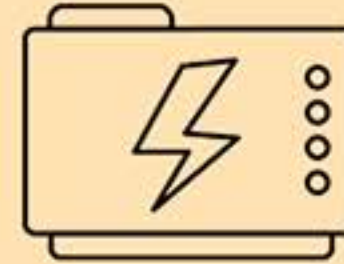
BORE HOLE



**24/7 CCTV
SURVILLANCE**



**AMPLE
PARKING SPACE**



**STAND BY
GENERATOR**

PEARL VIEW FEATURES

AMENITIES

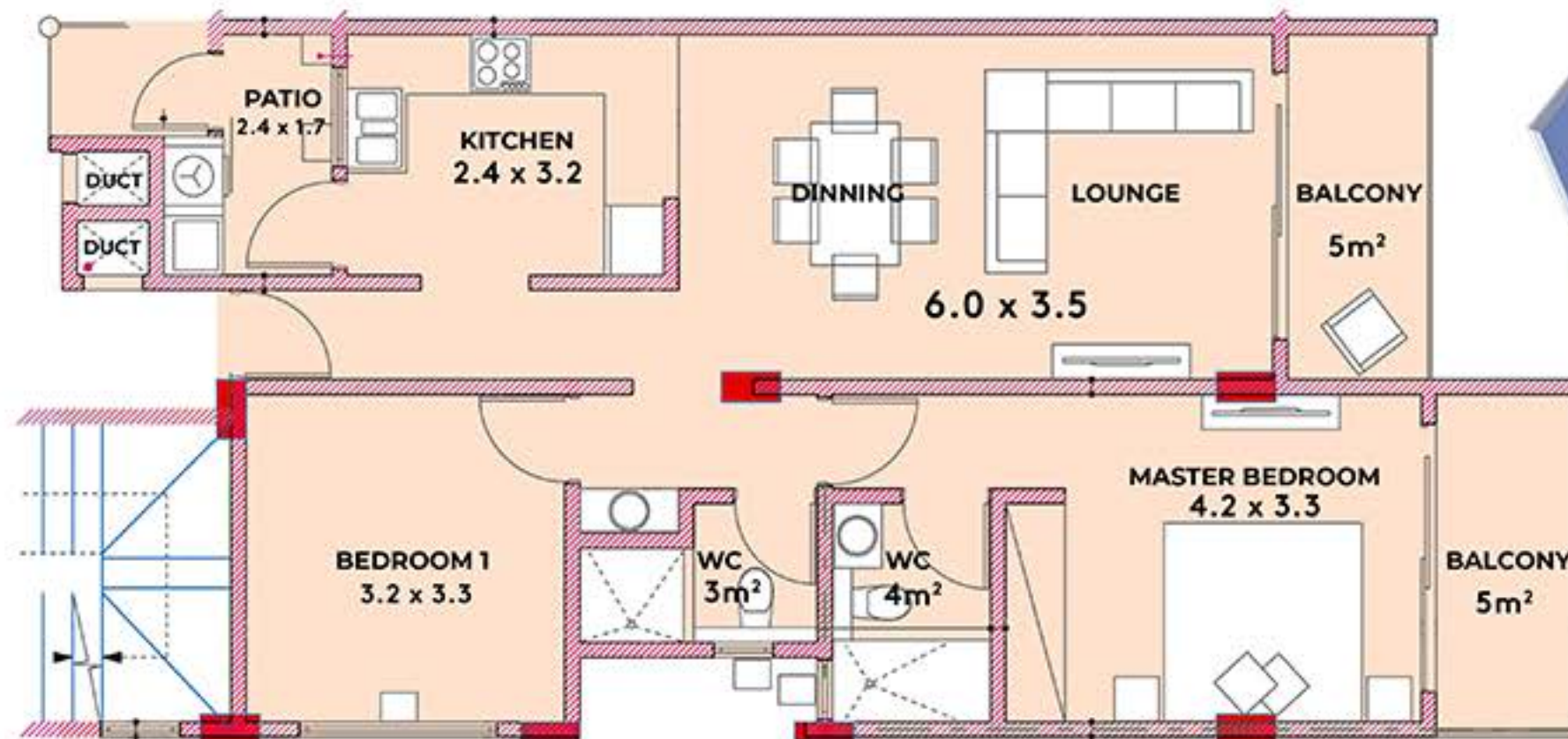
Pearl View offers a set of unique features that separate it from the park. All of these have been professionally chosen and idealistically crafted to meet a luxurious yet affordable lifestyle.

FLOOR PLANS

APARTMENT OFFERINGS

APARTMENT 2BHK — \$65000

Pearl View is composed of 100% residential units in two distinct apartment forms designed to deliver a sustainable, luxurious and quality living experience for its residents.



2
SPACIOUS
BEDROOMS

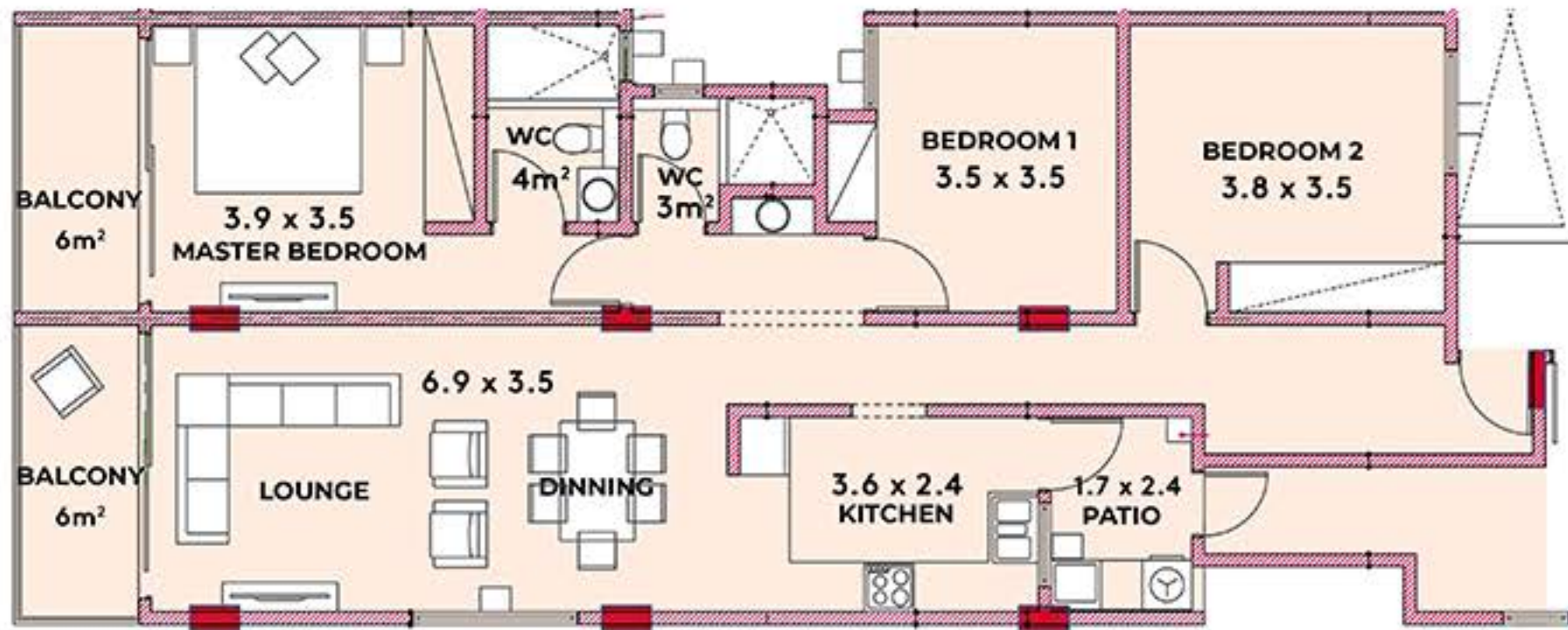
92
SQUARE METERS

2
BALCONIES

APARTMENT

3BHK — \$85000

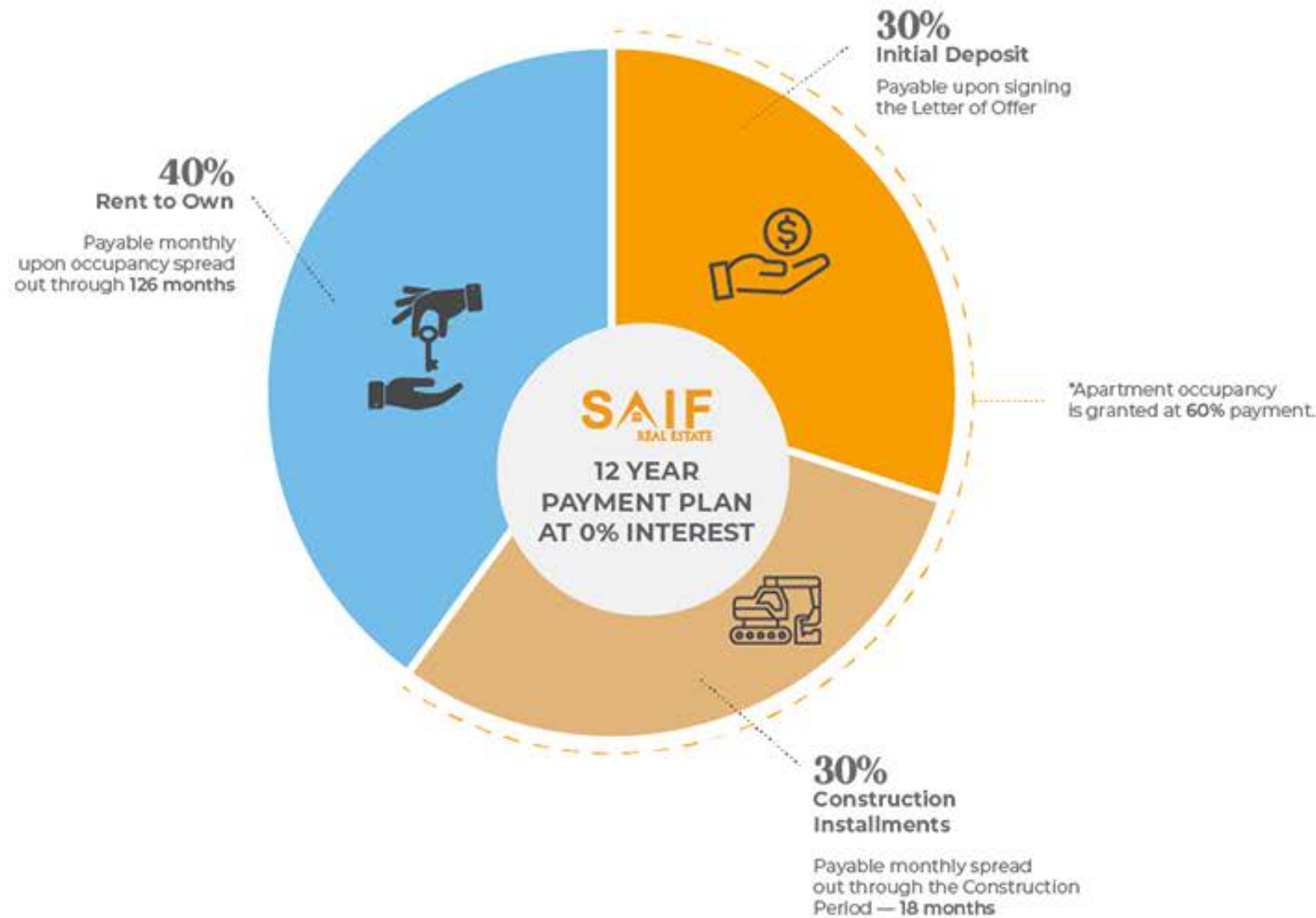
*Some images used are artistic impressions the final result may vary.



3
SPACIOUS
BEDROOMS

120
SQUARE METERS

2
BALCONIES



PAYMENT PLAN IN ACTION 2BHK — \$65000

- Deposit(30%) — **\$20000**
- Construction Installments(30%) — **\$19000** (\$1056 per month for 18 months.
- Rental Installments (40%) — **\$26000** (\$206 per month for 126 months)

3BHK — \$85000

- Deposit(30%) — **\$24000**
- Construction Installments(30%) — **\$27000** (\$1500 per month for 18 months.
- Rental Installments (40%) — **\$34000** (\$270 per month for 126 months)

While others give 2, 5 or whatever years at X% interest, Saif Real Estate gives you **12 years** at absolutely **0% interest**. No Pressure! At Saif we know that everyone deserves a luxurious lifestyle that's why we are offering it to you with an insanely flexible payment plan.

12 YEAR PAYMENT PLAN
0% INTEREST

PAYMENT PLAN

PEARL VIEW
RETURN ON INVESTMENT
R.O.I

Unit	Monthly Rent Unfurnished Unit	Monthly Rent Furnished Unit	Daily Rent Furnished Unit
2BHK	800,000 – 1,000,000 (UGX)	1,850,000 – 2,200,000 (UGX)	117,000 (UGX)
3BHK	1,500,000 – 2,000,000 (UGX)	2,800,000 – 3,200,000 (UGX)	150,000 (UGX)

Pearl
View-Kanada

Thank you

